

CBD DROPS WITH BOSWELLIA

5%



Ingredients: CAPRYLIC/CAPRIC TRIGLYCERIDE, CANNABIS SATIVA LEAF EXTRACT, BOSWELLIA SERRATA RESIN EXTRACT, ALPHAPINENE, LIMONENE, BETA-PINENE, ALPHA-TERPINENE, TERPINOLENE, LINALOOL



BOSWELLIA SERRATA
RESIN EXTRACT

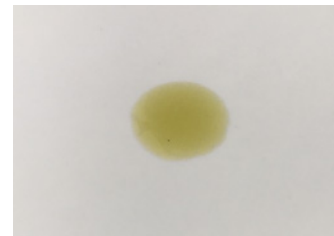


HEMP EXTRACT
Cannabis sativa L.

CERTIFICATE OF ANALYSIS No.: 2020-2569

CLIENT

Pharmahemp d.o.o. , Cesta v Gorice 8
1000 Ljubljana, Slovenija



SAMPLE

CBD DROPS FED 5% - mct oil / boswelia

Sample condition: SUITABLE
Sample ID: 204967
Sample type: Viscous liquid
Batch No.: DR05020338D

Work order: 2020-103463
Analysis ID: 2020_289
Method ID: PHL_RPC_10C
Method SOP: MET-002

Sample received: 03/12/2020
Start of analysis: 03/12/2020
End of analysis: 04/12/2020
Analyst: Janez Gerdenc

CANNABINOID PROFILE

	Concentration [% w/w]	Expanded uncertainty [% w/w]	Graphic presentation of relative cannabinoid concentration
CBDV - Cannabidivarin	0.055	0.013	
CBDA - Cannabidiolic acid	< LOQ	n/a	
CBGA - Cannabigerolic acid	< LOQ	n/a	
CBG - Cannabigerol	0.281	0.070	
CBD - Cannabidiol	5.02	0.25	
THCV - Tetrahydrocannabivarin	< LOQ	n/a	
CBN - Cannabinol	< LOQ	n/a	
CBC - Cannabichromene	< LOQ	n/a	
THC - Δ-9-Tetrahydrocannabinol	< LOQ	n/a	
THCA - Δ-9-Tetrahydrocannabinolic acid	< LOQ	n/a	

Units and abbreviations: % w/w = weight percent, < LOQ = below the limit of quantitation (0.03 % w/w), ND = not detected, n/a = not available.

The results given herein apply only to the sample as received. **Expanded Uncertainty** was calculated using coverage factor $k = 2$, corresponding to a double standard uncertainty and characterizes the interval value in which it is possible to expect the real value with a probability of 95%. This is stated according to the ISO/IEC Guide 98-3.

Total or partial reproduction of this document is not allowed without the permit of PharmaHemp d.o.o. The document does not substitute any other legal document.

Date issued:

04/12/2020

Approved by:

mag. Marko Dragan
Analytical Laboratory Manager

Authorized by:

dr. Boštjan Jančar
Chief Technology Officer

End of Certificate